

SYSTEMS

90

GRANIT 90 • VETRO 90 • PULSAR

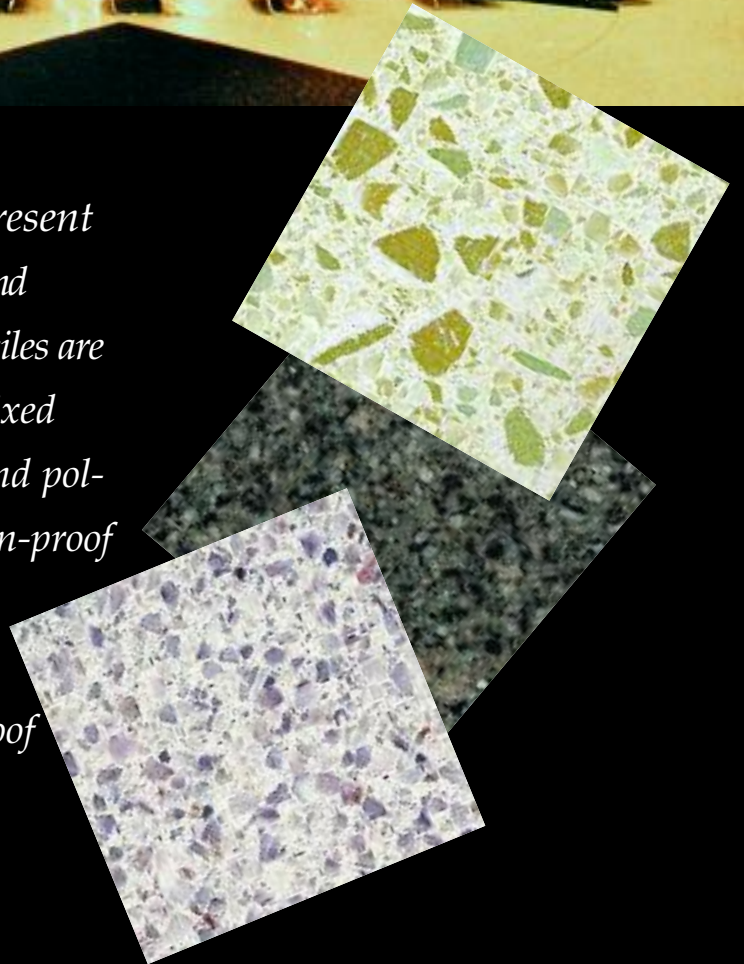


OCTOPUS

GRANIT 90 • VETRO 90 • PULSAR SYSTEMS



ctopus is pleased to present the Granit 90, Vetro 90, and Pulsar collection. These tiles are made from 90% natural material mixed with polyester resin, then ground and polished to a high gloss finish. Abrasion-proof and hard-wearing, these tiles are at the same time extremely resilient, resistant to thermal fatigue, frostproof and easy to maintain.



GRANIT 90

GRANIT 90 is made from genuine granite pebbles of different grain sizes, mixed with polyester resin, hardened, ground and polished to a high gloss finish, making an abrasion-proof, low maintenance floor, or highly durable wall panels and counter top surfaces in quality interior design.

Advantages of using Granit 90 include:

- 1) For floor applications, large tiles can be more quickly and inexpensively installed with fewer grout lines to spoil the visual impact.
- 2) Transition height problems are eliminated as tiles are only 1/4" thick.
- 3) Granite 90 is considerably less expensive than natural stones for floor and counter-top applications.
- 4) Available in large sheets (up to 4'x10') with a weight of less than 3 pounds per square foot. Abrasion proof, these materials are easy to maintain and suitable for floors, stairs, walls and furniture .
- 5) Granit 90 can be cut with a dry saw blade which makes installations easier.

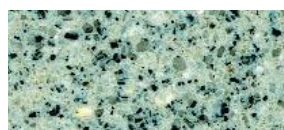
Granit 90 is available in a standard choice of 15 up-to-date colours, and there is also a further selection of special colours.



N 87 White



N 82 Bianco Castiglia



D 18 Bianco Titanio



A 5 Bianco Montorfano



C 57 Verde Maremma



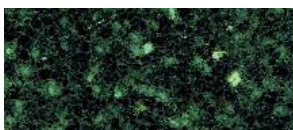
C 28 Verde Prato



N 83 Rosa Pearl



A 2 Rosa Baveno



N 54 Verde Giada



Bx 55 Rosso Aquila



N 85 Nero Cardinale



D 65 Rosa Etrusco



S 66 Labrador

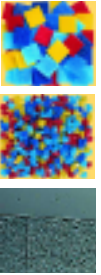


S 56 Diorite



B 61 Nero Tijuca

VETRO 90



VETRO 90 is an eye-catching mixture of vibrantly coloured Murano glass and polyester resin. This collection is available in a standard range of 20 contemporary colours, along with a further choice of special colours.



710 (1)



714 (1)



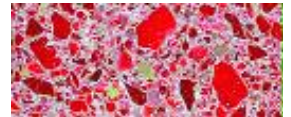
724 (2)



715 (1)



729 (4)



732 (5)



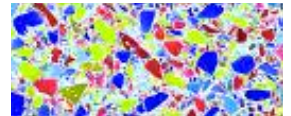
733 (5)



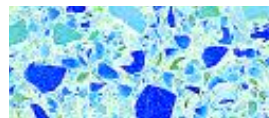
735 (5)



734 (5)



728 (3)



712 (1)



711 (1)



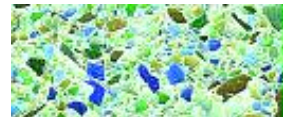
717 (1)



718 (1)



720 (2)



719 (1)



713 (1)



722 (2)



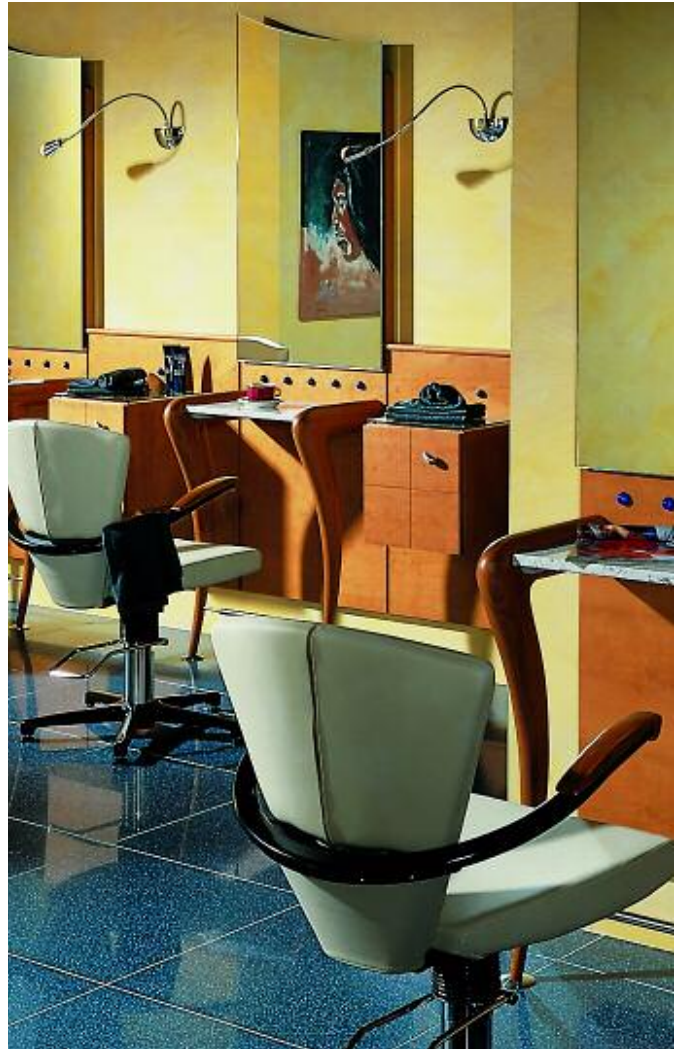
731 (4)



739 (5)

PULSAR

PULSAR offers a sophisticated addition to the stone collection. The subtle combination of granite, quartz and aventurin, which provides a metallic sparkle, is mixed with polyester resin, hardened and polished to a high gloss finish. Pulsar is available in 12 distinctive colours, and there is a further selection of special colours.



101 (2)



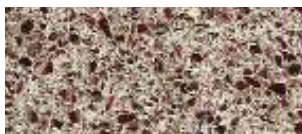
111 (2)



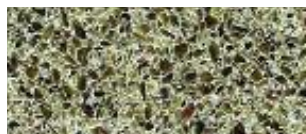
151



152



154



155



156



157



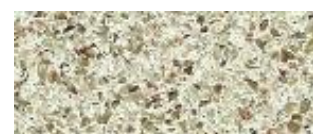
158



159



160



150

TECHNICAL DATA



MOHS HARDNESS SCALE

10	9	8	7	6	5	4	3	2	1
Diamond	Corundum	Topaz	Quartz	Feldspar	Granite	Fluorite	Calcite	Gypsum	Talc

VETRO

GRANIT 90/PULSAR/QUASAR

GRANIT 90 • PULSAR • QUASAR • VETRO 90

Flame retardant in accordance with DIN 4120	B1 PA-III 1236
Medical assessment of the smoke gases in accordance with DIN 53436	non-toxic
Area weight (material thickness 6.5 mm)	approx. 13.5 (kg/m ²)
Frost-/de-icing salt resistance	0.27 - 0.3 (% by vol.)
Indentation hardness in accordance with DIN 53456	170 - 411 (N/mm ²) (O 5 Mohs)
Bending tensile strength in accordance with DIN 18560 (P)	17.4 - 21.7 (N/mm ²)
Impact resistance in accordance with DIN 53453	0.35 (J/cm ²)
Bohme abrasion in accordance with DIN 52108 (P)	Class of hardness 1 8.3 (cm ³ /50cm ²)
Water absorption in accordance with DIN 52103 (P)	1.95 (% by wt)
Water vapor permeability in accordance with DIN 53122 (P)	1.3 (g/m ² d)
Swelling	0.1%
Density (P)	2.07 (kg/dm ³)
Thermal resistance in accordance with DIN 52612 (P)	0.005 (m ² K)/W)
Lightfastness in accordance with DIN 53389 (1*)	2-4
Resistance to cigarette burns in accordance with DIN 53799 (2*)	1
Reaction to hot pan bases in accordance with DIN 53799 (2*)	1-2
Reaction to boiling water in accordance with DIN 53799 (2*)	0
Lightfastness in accordance with BS 3261, Part 1: 1973	no visible changes
Anti-slip ASTM C1028	Dry.793 Wet.463

NOTE: Printed samples in this brochure are only a guide, and may vary slightly from the actual product. Contact your representatives for samples.

Standard

600 x 600 mm = 23.6" x 23.6" 640 x 3000mm = 25.2" x 118"
 600 x 3000mm = 23.6" x 118" 1200 x 3000mm = 47.25" x 118"

**FOR FABRICATION & INSTALLATION INFORMATION,
 PLEASE CONTACT YOUR LOCAL REPRESENTATIVE**



OCTOPUS

OCTOPUS PRODUCTS LIMITED

23 Gurney Crescent, Toronto, Ontario M6B 1S9
 Tel: 416-531-5051 Toll Free: 1-877-OCTOLAM
 Fax: 416-531-3254
 Website: www.octopusproducts.com
 e-mail: sales@octopusproducts.com

OCTOPUS PRODUCTS USA INC.

3014 South Halladay, Unit D,
 Santa Ana, CA 92705
 Tel: 714-429-0233
 Fax: 714-429-0233